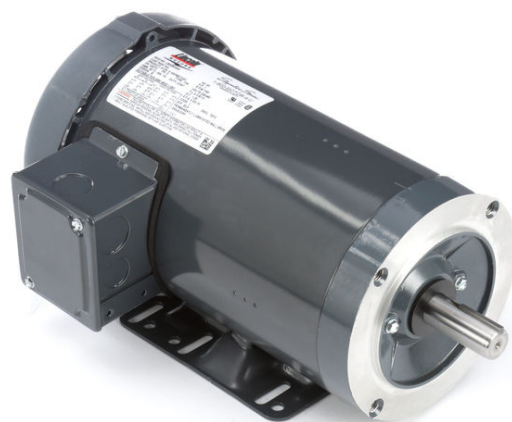


PRODUCT INFORMATION PACKET



Model No: LM26081
Catalog No: LM26081
1,1800,TEFC,143TC,3/60/230/460
Speed Ratio Motors



Regal and Leeson are trademarks of Regal Rexnord Corporation or one of its affiliated companies.
©2021 Regal Rexnord Corporation, All Rights Reserved. MC017097E





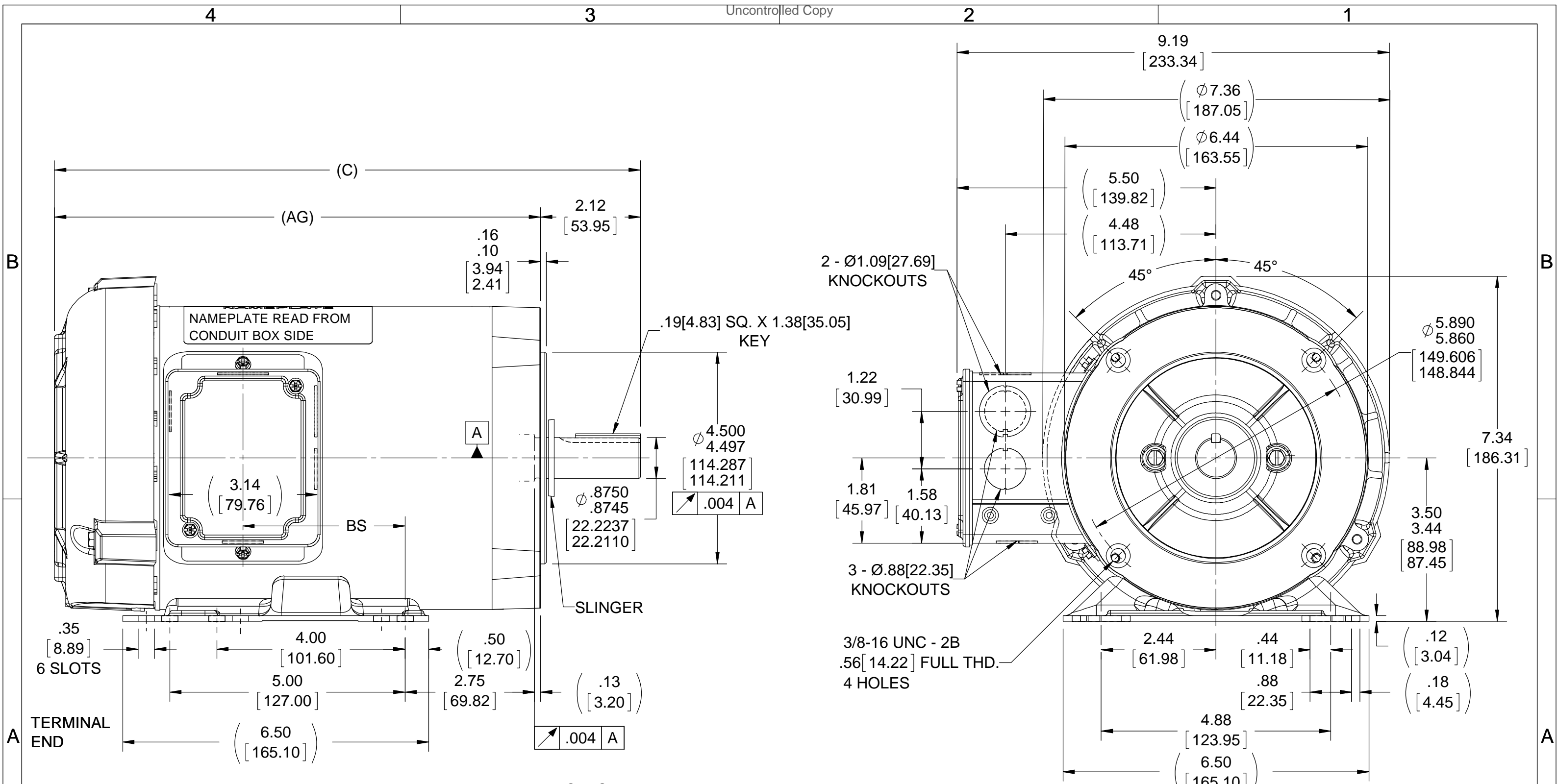
Nameplate Specifications

Output HP	1 Hp	Output KW	0.75 kW
Frequency	60 Hz	Voltage	230/460 V
Current	3.0/1.5 A	Speed	1755 rpm
Service Factor	1	Phase	3
Efficiency	82.5 %	Power Factor	74.5
Duty	Continuous	Insulation Class	F
Design Code	INV	KVA Code	M
Frame	143TC	Enclosure	Totally Enclosed Fan Cooled
Thermal Protection	Thermostats (N/C)	Ambient Temperature	40 °C
Drive End Bearing Size	205	Opp Drive End Bearing Size	203
UL	Recognized	CSA	Y
CE	N	IP Code	43
Number of Speeds	1		

Technical Specifications

Electrical Type	Squirrel Cage Inverter Duty	Starting Method	Inverter Only
Poles	4	Rotation	Reversible
Resistance Main	16.8 Ohms	Mounting	Rigid Base
Motor Orientation	Horizontal	Drive End Bearing	Ball
Opp Drive End Bearing	Ball	Frame Material	Rolled Steel
Shaft Type	T	Overall Length	12.87 in
Frame Length	7.56 in	Shaft Diameter	0.875 in
Shaft Extension	2.25 in	Assembly/Box Mounting	F1/F2 CAPABLE
Outline Drawing	100106LN-756	Connection Drawing	EE7308T-LN

This is an uncontrolled document once printed or downloaded and is subject to change without notice. Date Created:10/11/2021



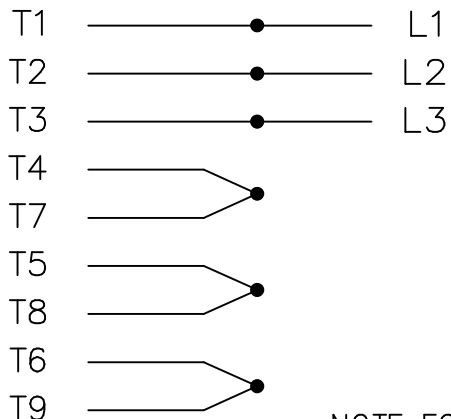
DASH	C	AG	BS	DASH	C	AG	BS
706	12.45 [316.23]	10.33 [262.38]	3.95 [100.33]	856	13.95 [354.33]	11.83 [300.48]	5.45 [138.43]
756	12.95 [328.93]	10.83 [275.08]	4.45 [113.03]	906	14.45 [367.03]	12.33 [313.18]	5.95 [151.13]
806	13.45 [341.63]	11.33 [287.78]	4.95 [125.73]	956	14.95 [379.73]	12.83 [325.88]	6.45 [163.83]

NOTES:
 1) CONDUIT BOX CAN BE ROTATED IN 180° STEPS.

DRAWING REVISION D	REVISION BY T AHER	DATE 02/07/2018	TOLERANCES UNLESS OTHERWISE SPECIFIED: DEC. INCH mm ANGLE .X ±0.1 [±2.5] ±7° 30" .XX ±0.03 [±0.76] .XXX ±0.005 [±0.127] .XXXX ±0.0005 [±0.0127] REMOVE BURRS & BREAK SHARP EDGES: .003/.015 [.076/.381] X 45° CORNER FILLETS: R.02 [.51] MACHINED SURFACES: 200 INCH/mm 5.1 mm SHOWN IN [BRACKETS]	DRAWN BY MSG	REGAL ™ Regal Beloit America, Inc.
ECO ECO-0143026	APPROVED BY PST	DATE 04/11/2018		DATE 11/01/2000	
ECO DESCRIPTION OUTLINE CONVERSION PROJECT <small>COPYRIGHT REGAL BELOIT AMERICA, INC. ALL RIGHTS RESERVED. PROPRIETARY AND CONFIDENTIAL INFORMATION - THIS DOCUMENT IS THE PROPERTY OF REGAL BELOIT AMERICA, INC. ("OWNER") AND CONTAINS OWNER'S PROPRIETARY INFORMATION. ANY PERSON, CORPORATION OR OTHER FIRM RECEIVING IT IS DEEMED, BY RECEIVING IT, TO AGREE THAT IT, AND/OR ANY PART OF IT, SHALL NOT BE DISCLOSED TO ANY PERSON, CORPORATION OR OTHER ENTITY, DUPLICATED, AND/OR USED, EXCEPT AS EXPRESSLY APPROVED IN WRITING IN ADVANCE BY OWNER. THIS DOCUMENT SHALL BE RETURNED TO OWNER UPON REQUEST. IT MAY BE SUBJECT TO CERTAIN RESTRICTIONS UNDER APPLICABLE EXPORT CONTROL LAWS AND REGULATIONS.</small>				APPROVED BY GK	DESCRIPTION OUTLINE 140T FR. - TEFC - C' FACE
				DATE 11/01/2000	MATERIAL
				REFERENCE 100106LN	PROCESS/FINISH
				THIRD ANGLE PROJECTION	SIZE B
				DRAWING NUMBER 100106LN	SHEET 1 OF 1

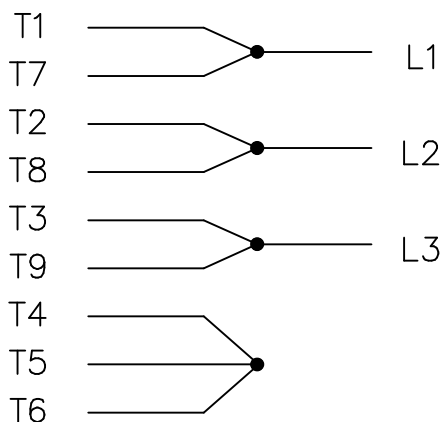
THREE PHASE
DUAL VOLTAGE MOTOR

HIGH VOLTAGE

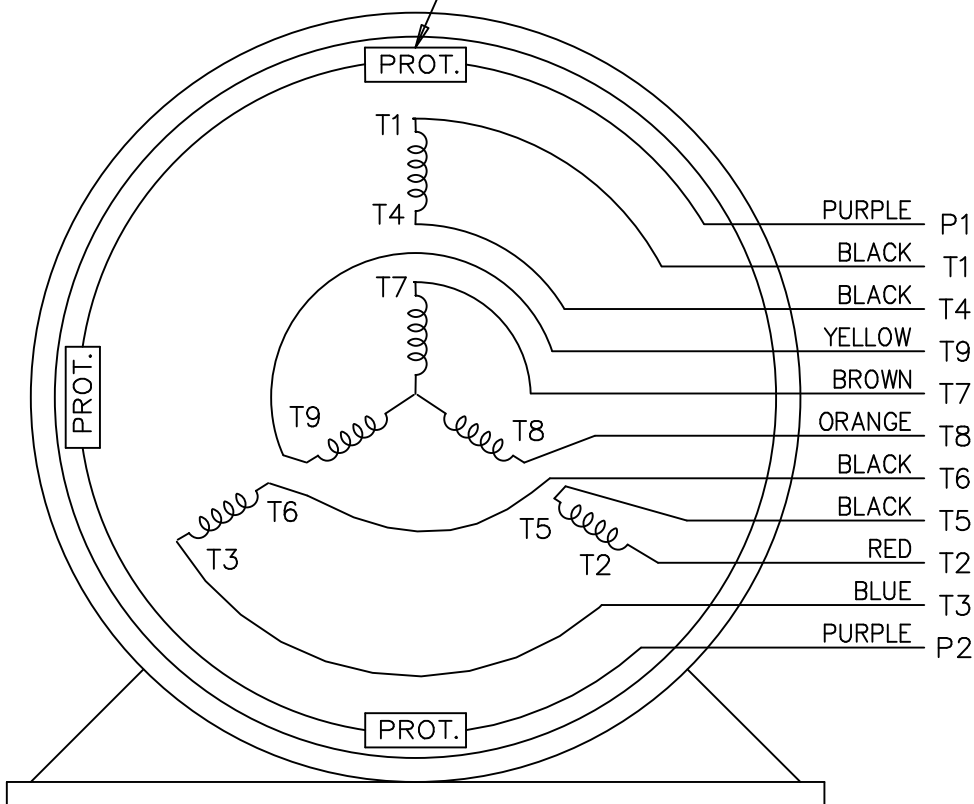


NOTE FOR FACTORY USE ONLY:
TO SURGE TEST FOR COMMON CONNECT:
HIGH VOLT: CONNECT P1 TO T1
 THEN P2 TO L1
LOW VOLT: CONNECT P1 TO T1 & T7,
 THEN P2 TO L1

LOW VOLTAGE



THREMO-PROTECTORS
CONNECTED IN SERIES.



VIEW OF TERMINAL END

				TOLERANCES UNLESS SPECIFIED			DRAWN BJK 07-16-2002			
				DEC.	INCHES		CHK DRS 07-18-2002			
				.X	±.1		APPD GK 07-18-2002			
				.XX	±.02	TITLE CONNECTION DIAGRAM			SCALE 1=1	
2 ADDED COLORS TO "T & P" LEADS CN 40494 MSG 08-08-2006 ML .XXX ±.005				3 PHASE - DUAL VOLTAGE MOTOR			REF			
1 NEW DRAWING BJK 07-18-2002 DRS .XXXX ±.0005				MAT'L.			FMF			
NO.	REVISION	BY & DATE	CHK	ANG	±7'30"	FINISH	PREV			
THIS DRAWING IN DESIGN AND DETAIL IS OUR PROPERTY AND MUST NOT BE USED EXCEPT IN CONNECTION WITH OUR WORK ALL RIGHTS OF DESIGN AND INVENTION ARE RESERVED THIS IS AN ELECTRONICALLY GENERATED DOCUMENT - DO NOT SCALE THIS PRINT				RFP	CAD FILE ee7308t_ln		SIZE	DRAWING NO.	PAGE OF	REV.
				DIST LB			A	EE7308T-LN	2	4

Data Sheet

Date: 2/1/2018

LM26081



Data @ 460 V

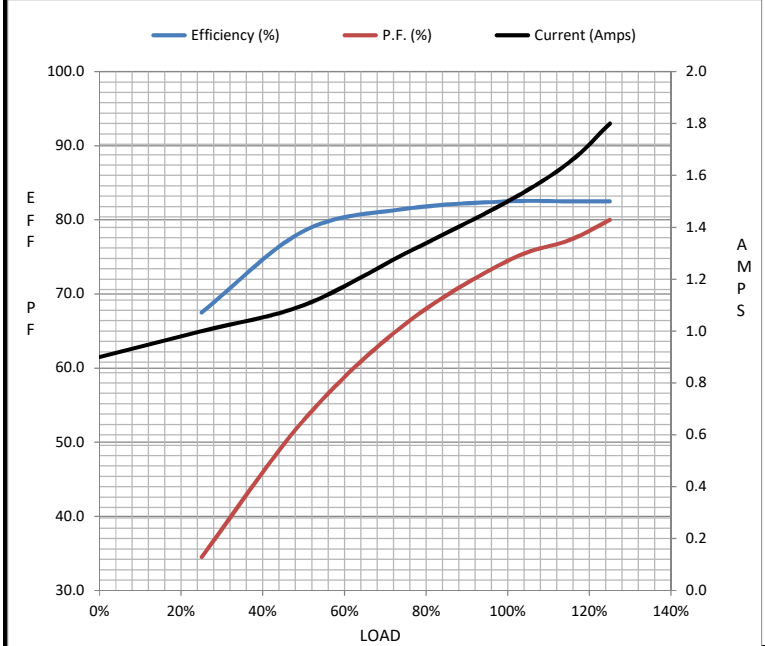
Motor Load Data

Load	0%	25%	50%	75%	100%	115%	125%	LR
Current (Amps)	0.90	1.00	1.10	1.30	1.50	1.65	1.80	13.0
Torque (ft-lb)	0.00	0.75	1.50	2.25	3.0	3.4	3.8	9.8
RPM	1800	1790	1780	1765	1755	1.749	1740	0
Efficiency (%)		67.5	78.5	81.5	82.5	82.5	82.5	
P.F. (%)	11.0	34.5	53.0	66.0	74.5	77.3	80.0	69.0

Motor Speed Data

	LR	Pull-Up	BD	Rated	Idle
Speed (RPM)	0	400	1250	1755	1800
Current (Amps)	13.0	11.5	8.8	1.50	0.90
Torque (ft-lb)	9.8	9.0	13.0	3.0	0.00

Information Block				
HP	1.0			
Sync. RPM	1800			
Frame	56			
Enclosure	TEFC			
Construction	TFR			
Voltage	230/460 V			
Frequency	60 Hz			
Design	B			
LR Code letter	M			
Service Factor	1.15			
Temp Rise @ FL	38 °C			
Duty	CONT			
Ambient	40 °C			
Elevation	1,000 feet			
Rotor/Shaft wk ²	0.08 Lb-Ft ²			
Ref Wdg	ZT4145 R2			
Sound Pressure @ 1M	62 dBA			
VFD Rating	CONSTANT 4:1			
Outline Dwg	A-100106LN-756			
Conn. Diag	A-EE7308T-LN			
Additional Specifications:				
0				
0				
EQUIV CKT (OHMS / PHASE)				
R1	R2	X1	X2	Xm
9.7130	6.4180	12.4390	11.1040	303.8800



Speed - Torque Curve

